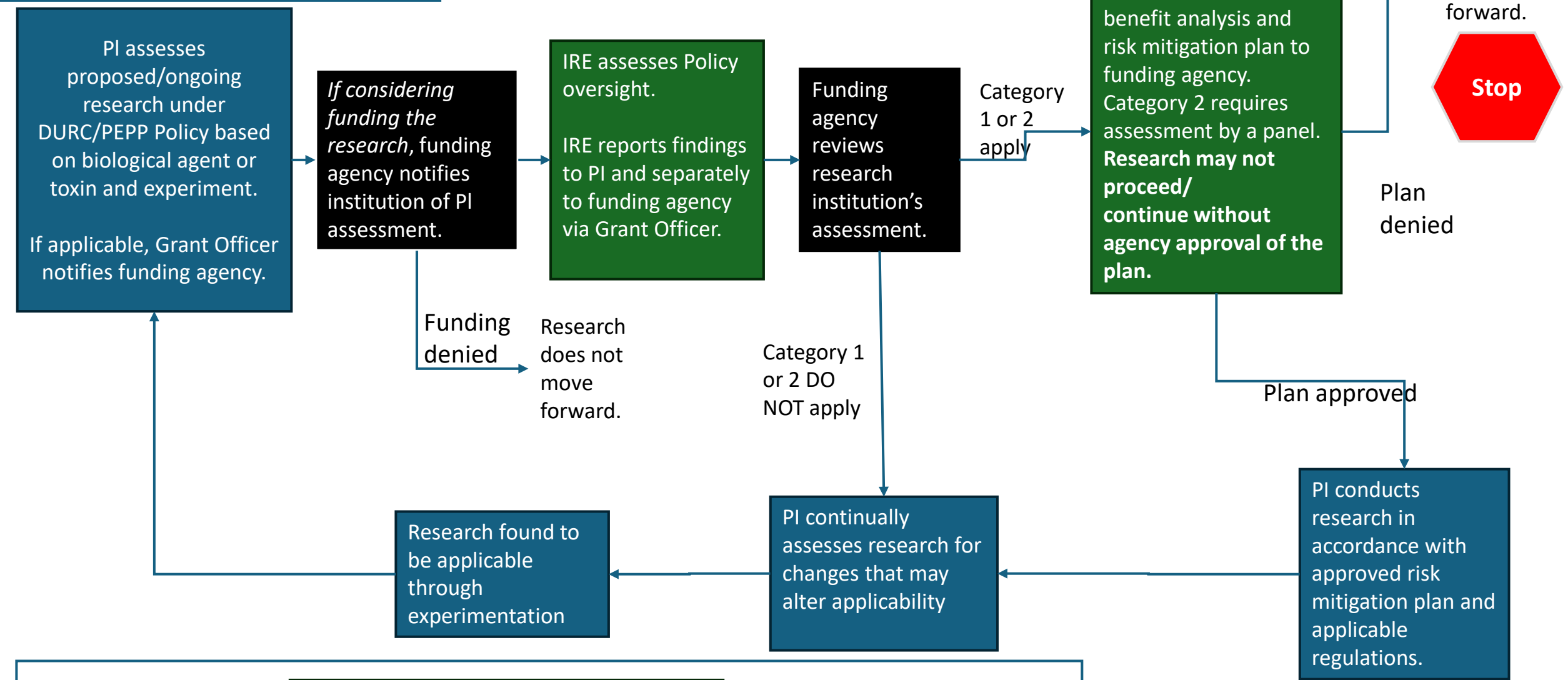


NOTE: Harvard requires institutional (IRE) evaluation of research under the Policy regardless of funding source. Non-sponsored research excludes funding agency steps and relies on institutional decisions.

Dual Use Research of Concern and Pathogens with Enhanced Pandemic Potential Review Process



Key:

PI	Institutional Review Entity (IRE)	Funding Agency/Dept
----	-----------------------------------	---------------------